

# How-To

## How To Generate a Arizona Breeding Bird Atlas (ABBA) Species List in HabiMap™ Arizona

### STEPS

1. **URL:** Direct browser to: <http://habimap.org/> (Fig 1, Step 1) → Click the image OR the link “HabiMap™ Arizona” → Read and agree to the Disclaimer.
2. **OPEN THE ABBA QUERY TOOL:** Click on the “ABBA Query” button in the “Tools” toolbar at the top of the screen.
3. **GENERATE THE TABLE:** The point query tool is active when the ABBA Query Tool is first opened. To generate an ABBA list, zoom to an area of interest and click on the map. This will generate a list of ABBA species that occur within the selected quad.
4. **SAVE THE QUERY LIST:** Once the table is generated, it can be saved as a .csv or a text file. Click ‘Export’ at the bottom of the table and save it in a format you prefer.

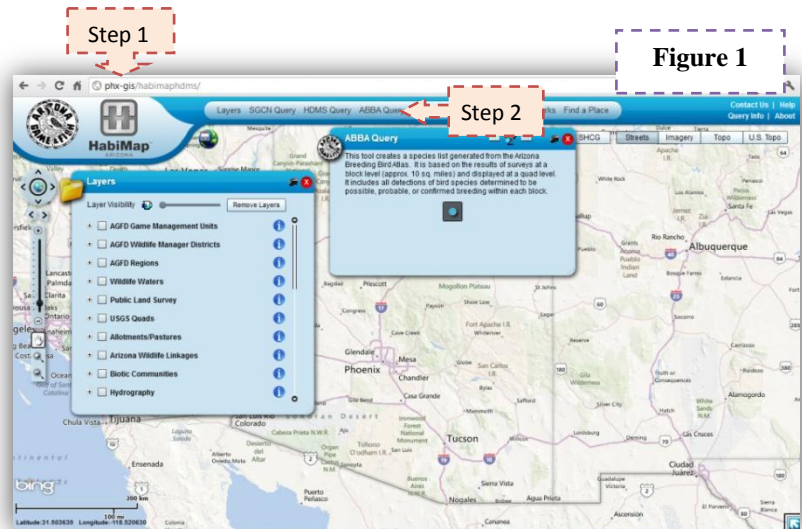


Figure 1

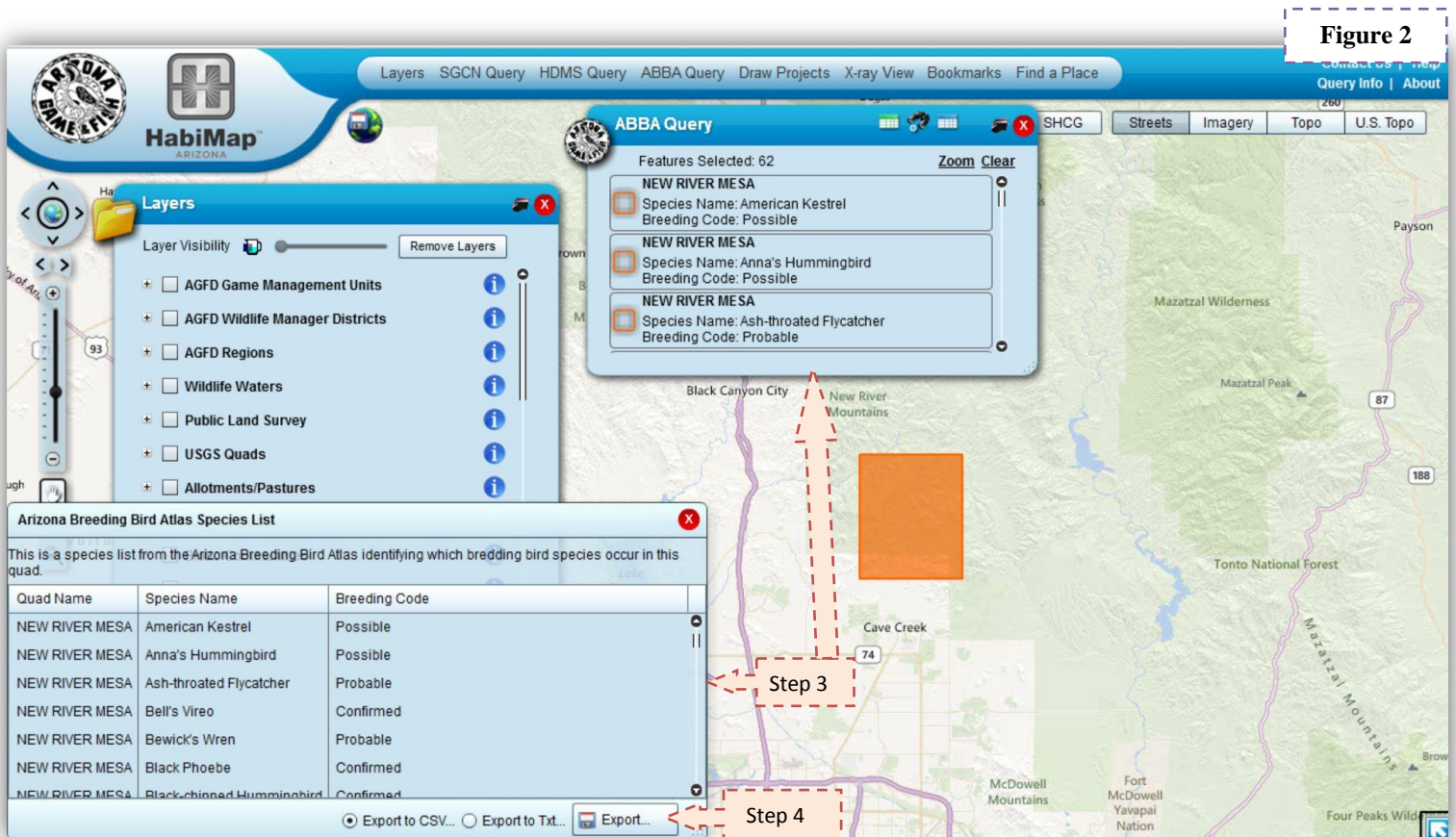


Figure 2